



EXCELON TILE

Excelon Vinyl-Asbestos Tile is representative of today's most widely used resilient flooring material for all grade levels in schools, offices, shopping plazas, and similar public and commercial buildings. Specially formulated

of vinyl resins fortified with asbestos fibers, it is an economical flooring, yet its many practical advantages include durability and resistance to grease, alkali, and dilute chemicals.

The various stylings in Excelon Tile

provide the architect and interior designer wide scope in floor designs and colorings to meet the needs of all types of architectural design and decoration.

Imperial Series

This group of Excelon Tile patterns is well-suited to heavy-traffic commercial interiors such as entrance lobbies, corridors, and shopping malls. Three interesting designs are included, offering a wide choice of colors ranging from warm to cool, from muted to bright. Color and pattern detail are dispersed throughout the thickness of the tile; they will last the life of the floor.

Form/gauge: 12" x 12" — 1/8", 3/32" gauges

Approx. installed price per sq ft: \$.45/\$.60 (1/8")

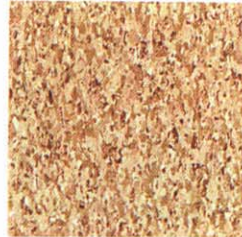
Recommended load limit: 50 lb per sq in.

Durability: superior (1/8"), excellent (3/32")

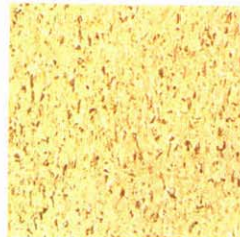
Resilience: fair

Quietness: acceptable

Ease of maintenance: excellent



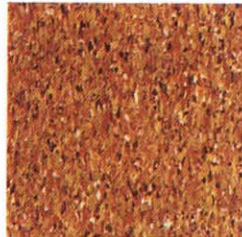
51830* Cottage Tan



51838* Mansion Gold



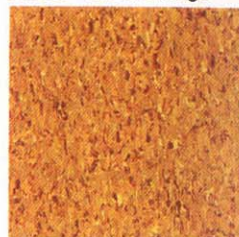
51843 Casa Orange



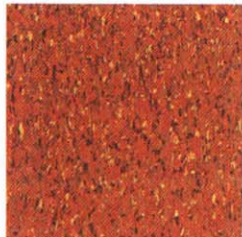
51831 Tower Gold



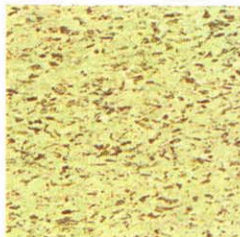
51839* Fortress White



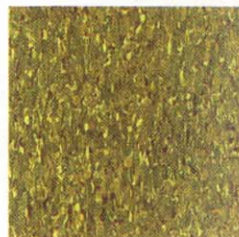
51844 Cathedral Gold



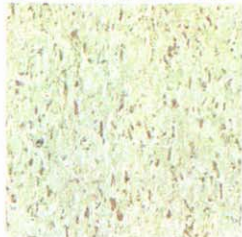
51833* Temple Orange



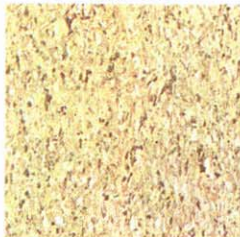
51840* Tent Olive



51845 Manor Green



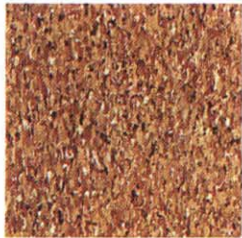
51836* Shelter White



51841* Castle Greige



51846 Teahouse Blue



51837* Palace Beige

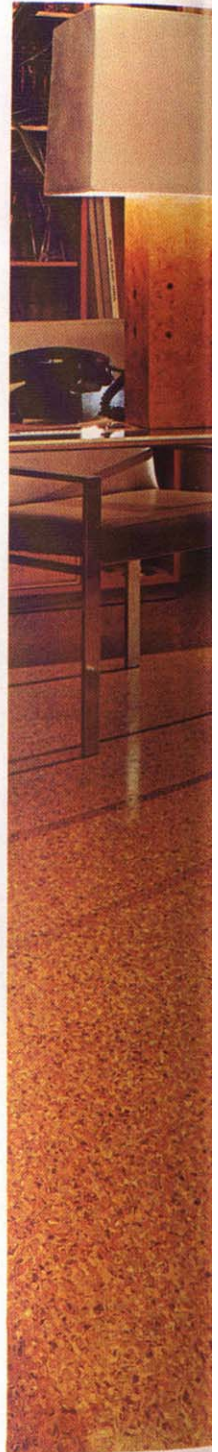


51842 Pagoda Red

Imperial Texture

This design intermixes a variety of strong accent colors to create a textured, tweedy design that helps to hide heel and scuff marks.

*Pattern numbers starred with an asterisk are available in both 1/8" and 3/32" gauges. All other 1/8" gauge Excelon patterns may be obtained in 3/32" gauge on special orders of 20,000 sq ft or more.



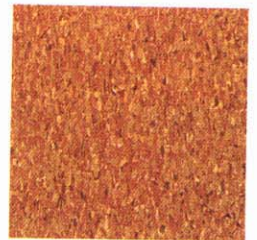


Imperial Modern

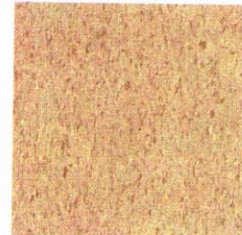
A tapestrylike design with relatively nondirectional graining. Its combination of highlight, middletone, and shadow creates a three-dimensional appearance.



51850* Fleece White



51855* Medium Cork



51851* Mellow Sand



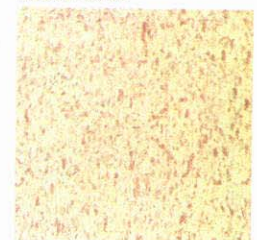
51856* Bayberry White



51854 Char Brown



51857 Olive



51858* Sandrift White

Imperial

A terrazzolike chip design with subtle coloration.



56880 Terrace White



EXCELON TILE

Classic Travertine
(Embossed)

Like all Excelon Tile in the 1/8" gauge, Classic Travertine stylings make these durable vinyl-asbestos floors well-suited for heavy-traffic commercial interiors.

Form/gauge: 12" x 12"—1/8" gauge

Approx. installed price per sq ft: \$.50/\$.60

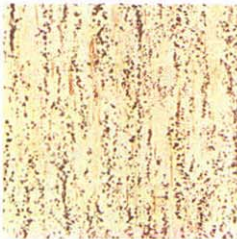
Recommended load limit: 50 lb per sq in.

Durability: very good

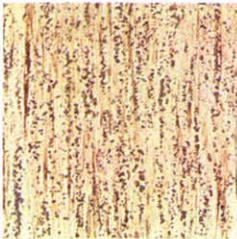
Resilience: fair

Quietness: acceptable

Ease of maintenance: very good



51880 White



51881 Beige

Feature Tiles

A wide selection of bold solid-color tiles used for accents. They are not recommended for floor field.

Form/gauge: 12" x 12"—1/8" gauge

Approx. installed price:
Group I—per sq ft—\$.65/\$.75
Group II—per sq ft—\$.75/\$.85

Recommended load limit: 50 lb per sq in.

Durability: superior

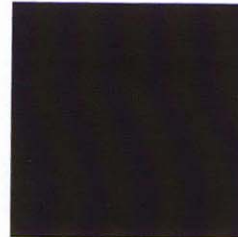
Resilience: fair

Quietness: acceptable

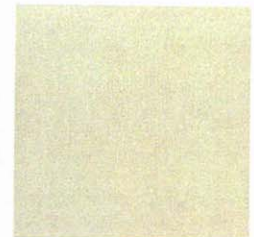
Maintenance: These solid-color tiles have been created expressly for use as accent spots with other 1/8" gauge Excelon stylings. They are not recommended for an entire flooring field because, like plain-colored floors of any composition, they tend to show scratches and soiling more readily than patterned materials.

Feature Strips

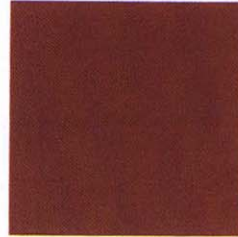
All colors shown here are available in Feature Strips (1" x 24") for custom floor design. Feature Strips are identified by changing the first two digits from 56 in Feature Tile (56)790 to 50 for Feature Strip (50)790. Feature Strips available in both 1/8" and service gauges.



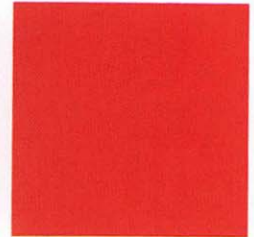
56790 Black I



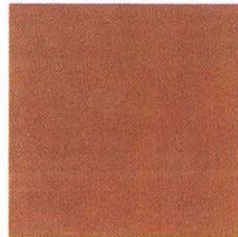
56791 White I



56797 Chocolate II



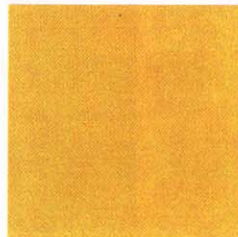
56806 Red II



56807 Neutral II



56808 Celery II



56809 Yellow II



56810 Gold II



56811 Orange II



56812 Blue II



The Craftlon Collection

Distinctive designs inspired by the craftsmanship of old-world artists and sculptors. Great care has been taken to reproduce every line in three-dimensional detail. Recommended for residential floors, the .080" gauge provides good durability.

Form/gauge: 12" x 12" except Romford Brick, 9" x 9"—.080" gauge

Approx. installed price per sq ft: \$.55/\$.65

Recommended load limit: 50 lb per sq in.

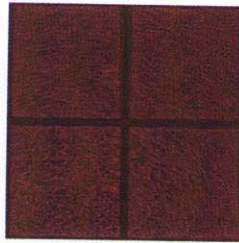
Durability: good

Resilience: fair

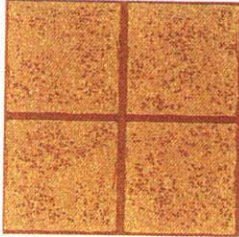
Quietness: acceptable

Ease of maintenance: good

Devonport



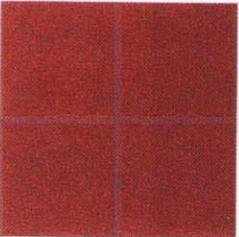
54461 Brown



54462 Gold

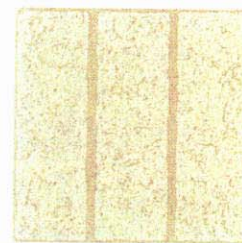


54463 White

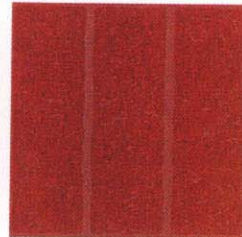


54464 Red

Romford Brick



57020 White



57021 Red

Leathercraft

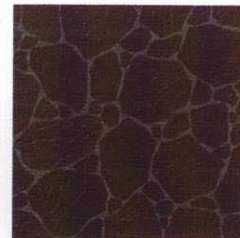


54570 White

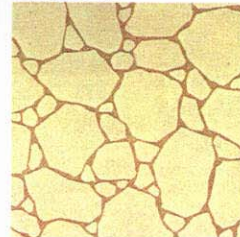


54575 Brown

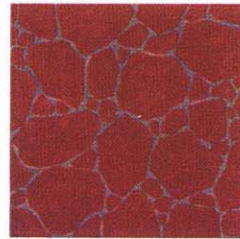
Stonefield



54470 Slate



54472 White



54473 Red

Armstrong EXCELON TILE

Custom

Unique floor decoration in embossed styles that create distinctive overall designs; can be used as accents in individualized custom effects.

Form/gauge: 12" x 12"—service gauge

Approx. installed price per sq ft: \$.30/\$.40

Recommended load limit: 50 lb per sq in.

Durability: good

Resilience: fair

Quietness: acceptable

Ease of maintenance: good

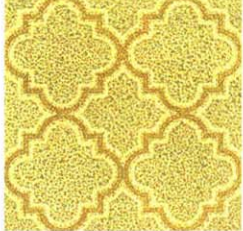
San Pedro



57070 Blue/White



57071 Olive



57072 Gold



57073 Orange



57074 Gold/White

Eden Wood



57140 Walnut



57141 Saddle



57142 White



57075 Red

Salvador



57170 Black/White



57171 Yellow



57173 Green



57174 Brown/Tan

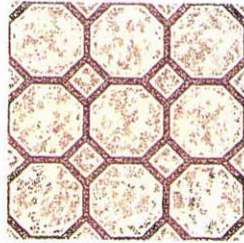


57175 Gold/Green

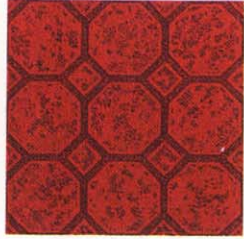




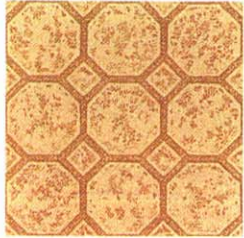
Bisque



57090 White



57091 Rust



57092 Beige



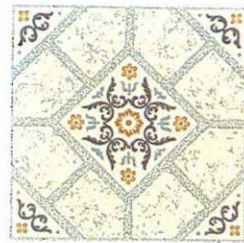
57094 Bronze

Country Brick



57400 Terra Cotta

Burnham



57080 Blue



57081 Olive

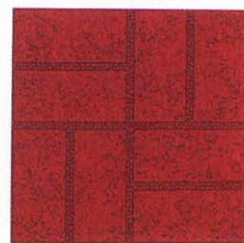


57083 Tan

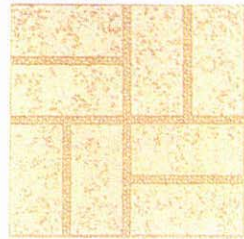


57401 White

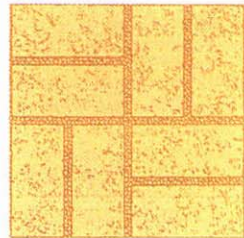
Glenmoore Brick



57130 Red

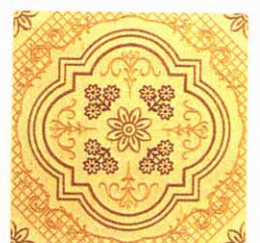


57131 White



57132 Gold

Adora



57290 Gold



57291 Neutral



57292 Burnt Umber



57293 Blue/Gold



57294 Green



EXCELON TILE

Regular and Promotional

This line includes both embossed and plain surface stylings in both regular and promotional patterns.

Form/gauge: 12" x 12"—service gauge

Approx. installed price per sq ft: \$.30/\$.40

Recommended load limit: 50 lb per sq in.

Durability: good

Resilience: fair

Quietness: acceptable

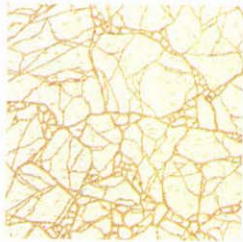
Ease of maintenance:

excellent (smooth surface)

good (embossed surface)

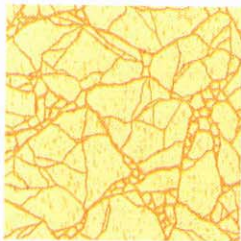
Embossed

Dianna White

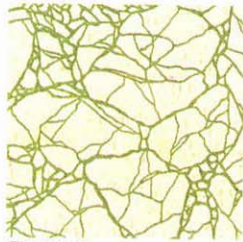


51202 Caligua

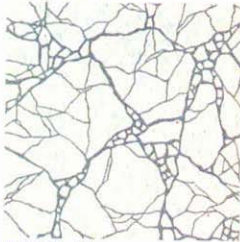
Marbletex



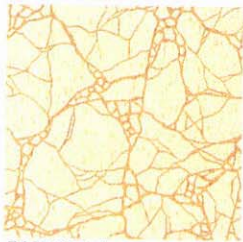
51207 Gold



51208 Green



51209 Blue



51210 Beige

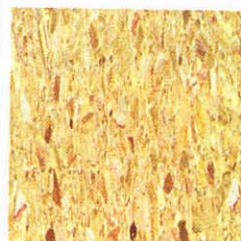
Smooth Surface

Dianna White

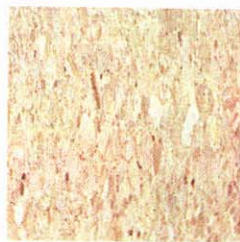


51200 Olympus

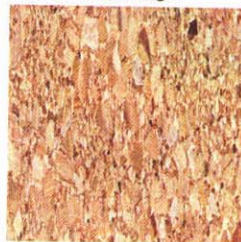
Palatial



51601 Nice Gold



51602 Alba Beige



51603 Cannes Beige



51607 Corsica Olive



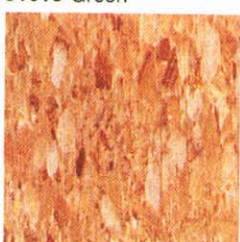
51616 Cool White



51617 Lemon



51618 Green



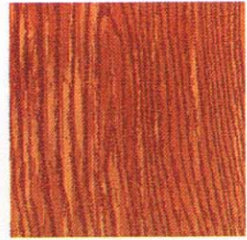
51619 Neutral





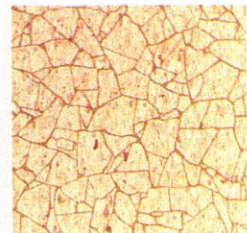
Promotional/
Embossed

Woodstock

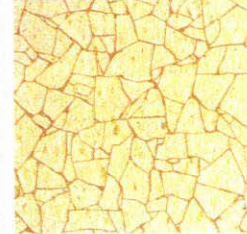


54251 Dark Cherry

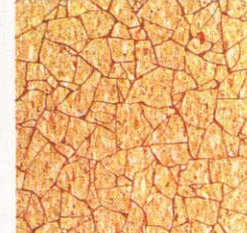
Shattered Stone



51170 Beige



51171 Multi-White



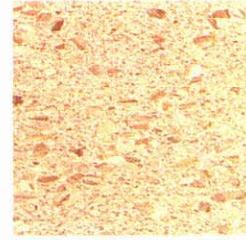
51172 Gold



51173 White

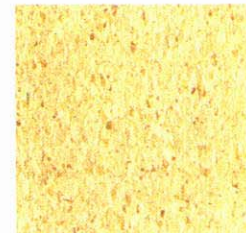
Promotional/
Smooth Surface

Driftstone

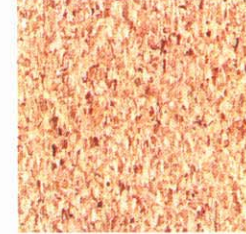


51161 Aztec White

Tidestone



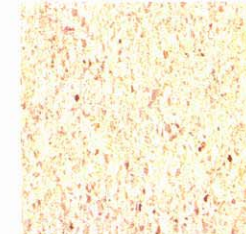
51756 Green



51760 Daytona Taupe



51762 Acapulco White



51764 Malibu Beige