

Armstrong

Form/gauge—9" x 9", 12" x 12" x 1/16", 3/32" gauge
 Approx. installed price per sq ft—Embossed: 25¢/35¢—Custom: 35¢/45¢
 Recommended load limit—25 lb per sq in.
 Durability—very good
 Resistance to heel damage—good
 Resilience/quietness—fair
 Grease/alkali resistance—excellent
 Stain resistance—good
 Ease of maintenance—excellent

EMBOSSED AND CUSTOM EXCELON TILE (Vinyl-Asbestos)

Available in a variety of pattern series and colors, Armstrong Embossed Excelon Tile offers a wide selection of today's most popular textured surface effects. With the exception of the Custom series (Decoresq, San Miguel, Tenolla, and Romford Brick), these handsome embossed stylings are offered in the same economy price range as smooth surfaced Excelon Tile.

STANDARD (Smooth Surface) EXCELON TILE

Available in a wide array of color combinations and design effects, Armstrong Standard (smooth surface) Excelon Tile is representative of today's most widely used resilient flooring materials. Specially formulated of pure vinyl resins fortified with asbestos fibers, it is an economical flooring, yet its many practical advantages include excellent durability and resistance to grease, oils, alkali, and household chemicals.

Smooth surface stylings are shown on page 17.

CUSTOM DECORESQ 12" x 12" x 1/16"



57040 Rome White



57041 Dublin Gold



57042 Lima Avocado



57043 Prague White



57044 Bonn Beige



57045 Madrid Orange

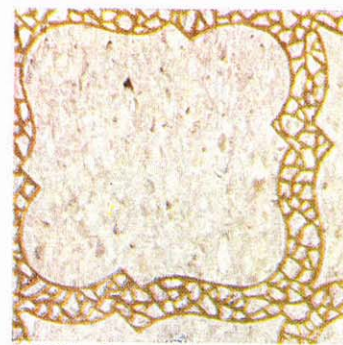


57046 Oslo Olive



57047 Manila White

CUSTOM SAN MIGUEL 12" x 12" x 1/16"



57030 Puente White



57031 Vigo Beige



57032 Carballo Gold

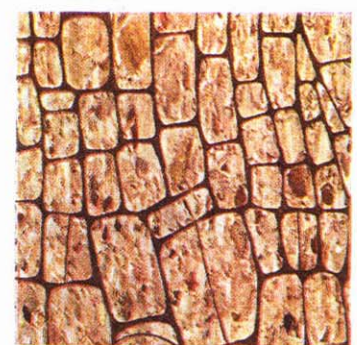


57033 Adra Olive



57034 Tauste Taupe

TORTOISE SHELL 12" x 12" x 1/16"



54500 Rattler Gold



54501 Boa Beige



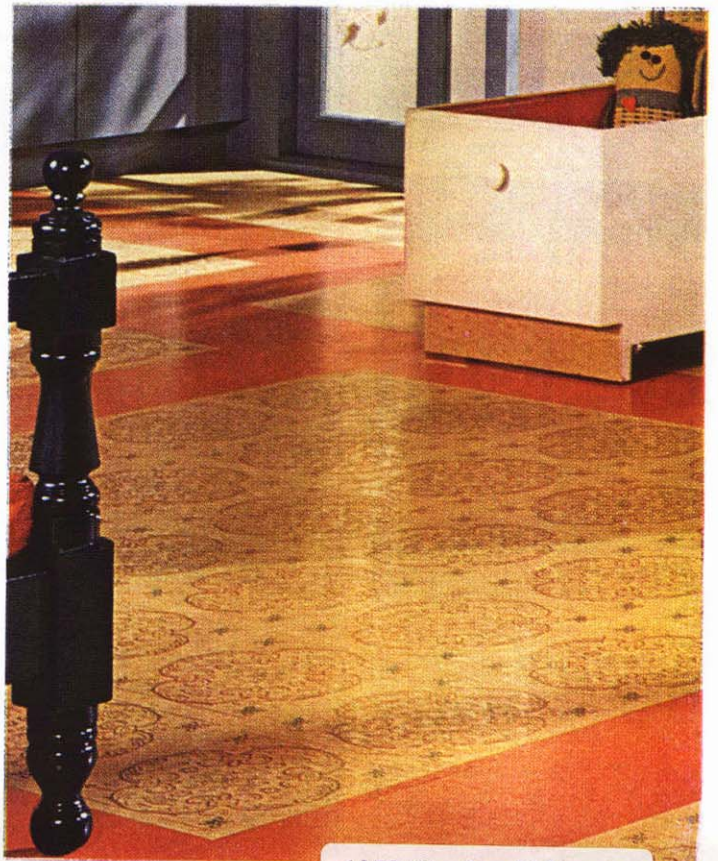
54503 Python Tan



54504 Adder Green

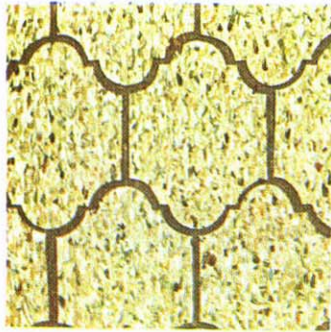


54505 Cobra Copper



CUSTOM TENOLLA

12'' x 12'' x 1/16''



57010 Nuevo Olive



57011 Juarez White



57014 Tampico Beige



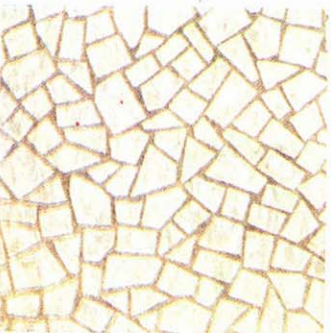
57017 Cortez Gold



57018 Prado Orange

METRIC CHIP

12'' x 12'' x 1/16''



54280 Majorca White

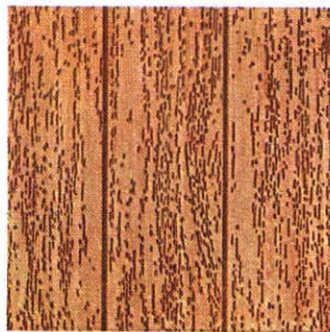


54281 Palma Beige



54283 Madura Taupe

PARQUET 9'' x 9'' x 1/16''



54240 Light Oak



54241 Dark Oak

WOODSTOCK

12'' x 12'' x 1/16''



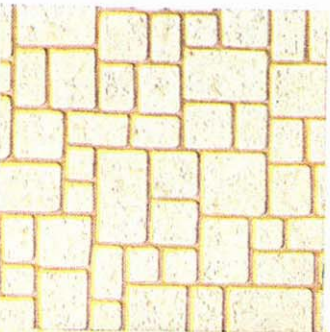
54250 Light Cherry



54251 Dark Cherry

RANDOM MOSAIC

12'' x 12'' x 1/16''



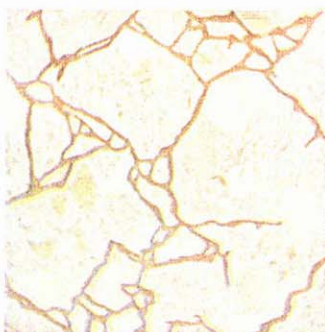
54261 Porcelain White



54262 Terra Cotta Red

POLISHED MARBLE

12'' x 12'' x 1/16''



54190 Statuary White



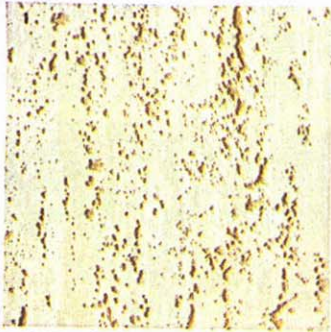
54192 Peruvian Beige



54193 Meadow White

TRAVERTINE

12'' x 12'' x 1/16'' (3/32'')



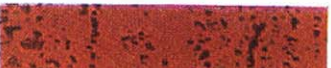
54220 Catiline



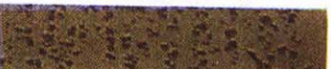
54221 Vetralla



54222 Ponzano



54226 Verona (3/32'' only)



54227 Pallazo (3/32'' only)

TAVARRA 12'' x 12'' x 1/16''



54210 White



54211 Avocado



54212 Beige



54213 Copper



54214 Gold



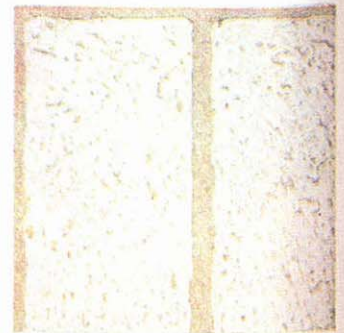
54215 Blue



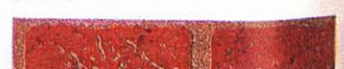
54216 Multi-White

CUSTOM ROMFORD BRICK

9'' x 9'' x 3/32''



57020 Yorktowne White



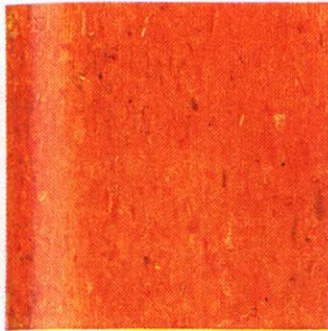
57021 Concord Red

Form/gauge—12" x 12" x 1/16"
 Approx. installed price per sq ft—25¢/35¢
 Recommended load limit—25 lb per sq in.
 Durability—very good
 Resistance to heel damage—good
 Resilience/quietness—fair
 Grease/alkali resistance—excellent
 Stain resistance—good
 Ease of maintenance—excellent

Form/gauge—9" x 9" x 1/8" gauge
 Approx. price per sq ft—25¢/35¢
 Load limit—25 lb per sq in
 Durability—excellent
 Resistance to heel damage—fair
 Resilience/quietness—poor
 Grease/alkali resistance—excellent
 Stain resistance—good
 Ease of maintenance—excellent

TIDESTONE

12" x 12" x 1/16"



51757 Vero Orange



51758 Bristol Gold



51759 Hilo Avocado



51760 Daytona Taupe



51762 Acapulco White



51764 Malibu Beige



51765 Baydin Olive



51766 Myrtle Beige

COASTAL STONE

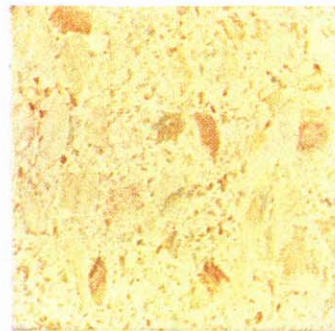
12" x 12" x 1/16"



51791 Shore White

DRIFTSTONE

12" x 12" x 1/16"



51160 Inca Ivory



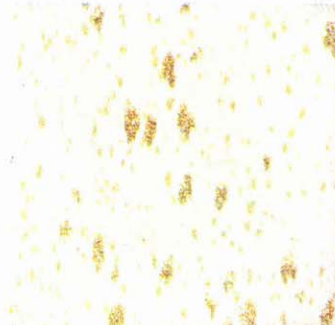
51161 Aztec White



51166 Amazon White

DIANNA WHITE

12" x 12" x 1/16"



51200 Olympus



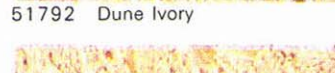
51202 Caligua



51203 Trajan



51792 Dune Ivory

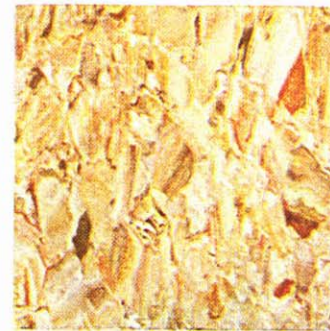


51793 Castle Beige



51794 Spray Green

PALATIAL 12" x 12" x 1/16"



51601 Nice Gold



51602 Alba Beige



51603 Cannes Beige



51604 San Remo White



51605 Arles Taupe



51607 Corsica Olive



51608 Samoa Copper



51609 Manet Blue

CORKSTYLE

12" x 12" x 1/16"



56840 Light

STANDARD



56710 White Bayberry



56721 Bayberry Beige



56759 Fawn White



56767 Ecu



56770 Seneca White



56771 Mohawk Gray



56772 Comanche Black



56777 Apache Red



56780 Osage Green



56783 Iroquois Tan

Armstrong

Form/gauge—9" x 9", 12" x 12" / 1/8", 3/32" gauges
 Approx. installed price per sq ft—30¢/45¢
 Recommended load limit—25 lb per sq in.
 Durability—excellent
 Resistance to heel damage—fair
 Resilience/quietness—poor
 Grease/alkali resistance—excellent
 Stain resistance—good
 Ease of maintenance—excellent

Form/gauge—12" x 12" / 1/8"
 Group 1—40¢/50¢ per sq ft
 Group 2—50¢/60¢ per sq ft
 Load limit—25 lb per sq in.
 Durability—excellent
 Resistance to heel damage—fair
 Resilience/quietness—poor
 Grease/alkali resistance—excellent
 Stain resistance—good
 Ease of maintenance—good

EXCELON TILE (Vinyl-Asbestos)

Excelon Tile is representative of today's most widely used resilient flooring material for all grade levels in schools, offices, shopping plazas, and similar public and commercial buildings. Specially formulated of pure vinyl resins fortified with asbestos fibers, it is an economical flooring, yet its many practical advantages include durability and resistance to grease, alkali, and dilute chemicals.

The various stylings in Excelon Tile provide the architect and interior designer wide scope in floor designs and colorings to meet the needs of all types of architectural design and decoration. The rich beauty of any of the Excelon stylings on these pages, with the exceptions of the Embossed Travertine and Custom Rumford Brick stylings, will last the life of the floor because the uniform color and graining extend through the entire thickness of the tiles.

EXCELON FEATURE TILE

The solid-colored tiles shown in the right-hand column on this page have been created expressly for use as accent spots with other 1/8" gauge Excelon stylings. They are *not* recommended for an entire flooring field because, like plain-colored floors of any composition, they tend to show scratches and soiling more readily than patterned materials.

MONTREL 12" x 12" x 1/8"



51800 Cafe White



51801 Villa Olive



51802 Forum Gray



51804 Rotunda Beige

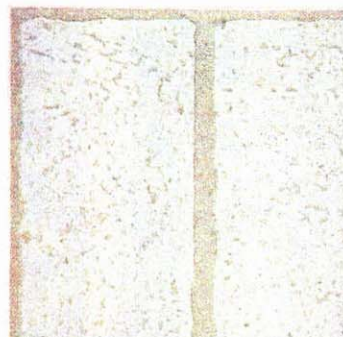


51806 Frieze Tan



51807 Portico Bronze

CUSTOM ROMFORD BRICK 9" x 9" x 3/32"

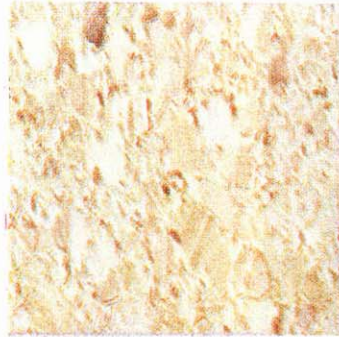


57020 Yorktowne White



57021 Concord Red

PRESIDENTIAL 12" x 12" x 1/8" (3/32")



51950 Montpelier Beige



51951 Wheatland White



51952 Monticello Gold



51953 Mt. Vernon Taupe

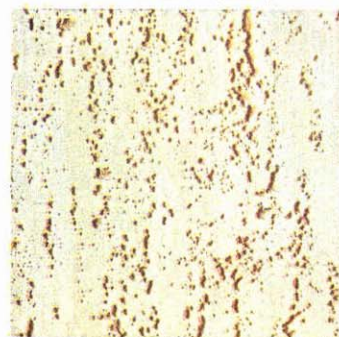


51954 Sagamore Green



51955 Hermitage Brown

TRAVERTINE 12" x 12" x 1/16" (3/32")



54220 Catiline

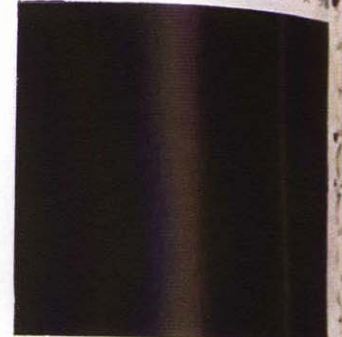


54221 Vetralla



54222 Ponzano

FEATURE TILE 12" x 12" x 1/8"



56790 Black



56791 White



56800* Olive



56801* Burnt Orange



56803* Curry



56804 Burnt Umber



56805* Blue



56806* Red



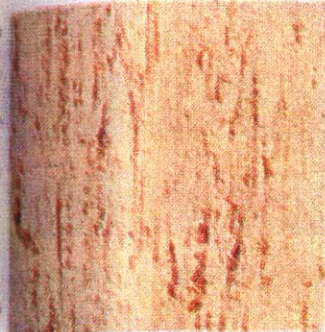
56807 Neutral

EXCELON FEATURE STRIPS

All colors in Excelon Feature Tile are also available in Feature Strips (1" wide x 24" long) for accents in custom floor design. Feature Strip colors should be specified by changing the first two digits from 56 in the Feature Tile Series (56)790 to 50 for Feature Strips (50)790. A Feature Strip in Chocolate (50797) is also available.

Form/gauge—9" x 9", 12" x 12" / 1/8", 3/32" gauges
 Approx. installed price per sq ft—30¢/35¢
 Recommended load limit—25 lb per sq in.
 Durability—excellent
 Resistance to heel damage—fair
 Resilience/quietness—poor
 Grease/alkali resistance—excellent
 Stain resistance—good
 Ease of maintenance—excellent

TRAVERTEX 12" x 12" x 1/8"



51130 Briar Tan



51131 Frost White



51133 Cream White



51134 Sable Beige



51135 Mist White



51137 Harvest Ivory



51138 Nougat Beige

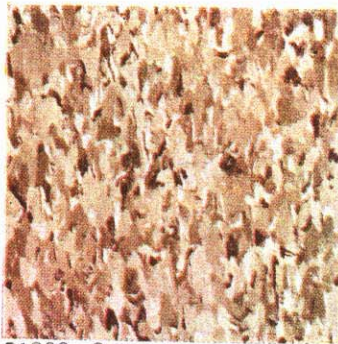


51142 Flax White



51147 Blue Moon

IMPERIAL TEXTURE 12" x 12" x 1/8"



51830 Cottage Tan



51831 Tower Gold



51832 Cabin Brown



51833 Temple Orange



51834 Pyramid Beige



51835 Cabana Olive



51836 Shelter Gray



51837 Palace Beige

IMPERIAL 12" x 12" x 1/8"



56861 Ancestral White

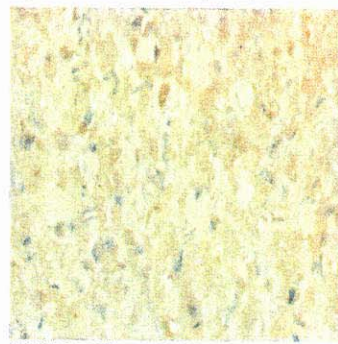


56876 Wild Honey



56880 Terrace White

IMPERIAL MODERN 12" x 12" x 1/8" (3/32")



51850 Fleece White



51851 Mellow Sand



51852 Smoke Beige



51853 Shadow Brown



51854 Char Brown



51855 Medium Cork



51856 Bayberry White



51857 Olive



51858 Sandrift White



51859 Sable Gray



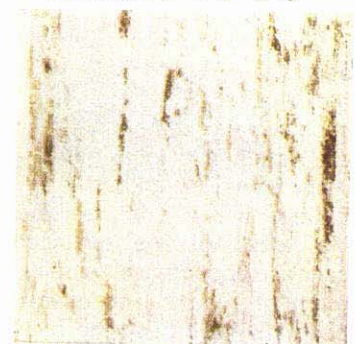
51860 Light Umber



51861 Powder Gray

Form/gauge—9" x 9" / 1/8" gauge
 Approx. installed price per sq ft—30¢/35¢
 Load limit—25 lb per sq in.
 Durability—excellent
 Resistance to heel damage—fair
 Resilience/quietness—poor
 Grease/alkali resistance—excellent
 Stain resistance—good
 Ease of maintenance—excellent

STANDARD 9" x 9" x 1/8"



56710 White Bayberry



56721 Bayberry Beige



56759 Fawn White



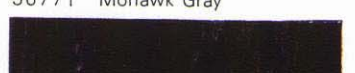
56767 Ecru



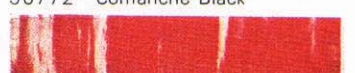
56770 Seneca White



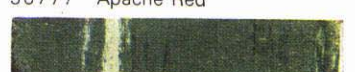
56771 Mohawk Gray



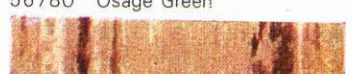
56772 Comanche Black



56777 Apache Red



56780 Osage Green



56783 Iroquois Tan

1/8"
3 ft
sq ft
—fair
xcellent
d
12" x 1/8"

STRIPS
 Feature
 in Fea
 x 24"
 custom
 re Strip
 cified by
 vo digits
 ture Tile
 50 for
 790. A
 chocolate
 able.