

Armstrong

VINYL-ASBESTOS TILE

EXCELON TILE—SPATTER

Armstrong Excelon Tile is a vinyl-plastic-asbestos tile with exceptional dimensional stability. It is unusually strong and tough and is resistant to oils, fats, and greases of both the edible oil and mineral oil types. Excelon Tile is also resistant to alkaline substances, soaps, detergents, kerosene, and many solvents. It has unusually good resistance to dilute acids and is recommended for floor areas, such as chemical laboratories, which may be subject to occasional spillage of acids. Excelon Tile also is fire retardant, meeting Columbia University fire tests.

Excelon Tile offers a finished floor of unusual beauty. Its wearing surface is unusually smooth and glossy—twice the surface gloss of the finest asphalt tile, as measured by the Gardner Glossmeter.

Five stylings in Excelon Tile offer a wide choice for effective floor designs. Straight grained, Woodtone and Designers Series Excelon are available in both $\frac{1}{8}$ " Gauge and Service Gauge ($\frac{1}{16}$ "). Corkstyle and Spatter Excelon are made in Service Gauge only. Excelon Tile in the $\frac{1}{8}$ " Gauge is recommended for residential as well as commercial buildings and heavy traffic areas. Service Gauge Excelon Tile is recommended for attractive, easy to maintain floors in light commercial and residential interiors.

Gauges—Straight Grained, Woodtone, and Designers Series in $\frac{1}{8}$ " Gauge and Service Gauge ($\frac{1}{16}$ "). Spatter and Corkstyle in Service Gauge only.

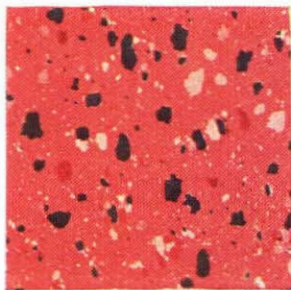
Size—9" x 9" tiles only.

Cove Base—Rubber or Asphalt.

Beveled Edging—Excelon Beveled Edging is available in Service Gauge and Plain Black only. Use Asphalt Beveled Edging for $\frac{1}{8}$ " Gauge Excelon.

Specifications—See flooring, page 26.

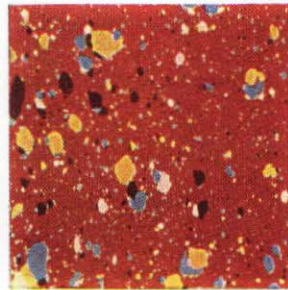
Federal Specifications—Armstrong Excelon Tile meets the requirements of Interim Federal Specifications No. L-T-751 (GSA-FSS) defining Type 1 Semi-Flexible Vinyl Plastic Floor Tile $\frac{1}{8}$ " gauge (except Corkstyle and Spatter stylings which do not meet the requirements of paragraph 3-3).



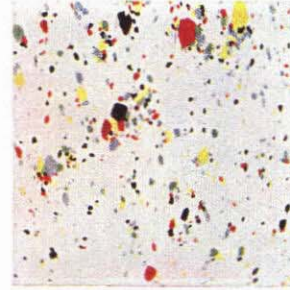
Plymouth Pink No. 745



Norwich Turquoise No. 743

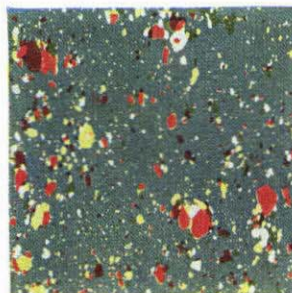


Bangor Copper No. 744

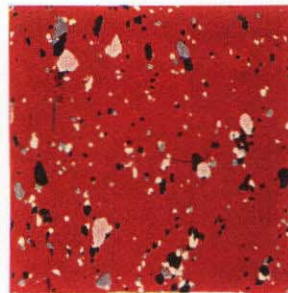


Andover White No. 735

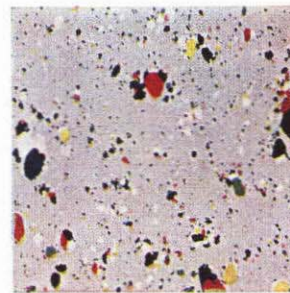
Spatter Excelon Tile is made in 9" x 9" tiles and in Service Gauge only. It combines the popular spatterdash styling with the other outstanding characteristics of this flooring. The Spatter styling is not recommended for use in heavy commercial areas.



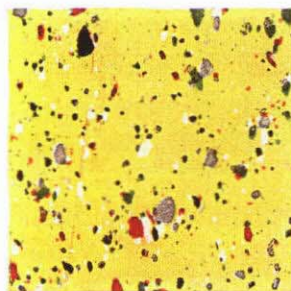
Lexington Green No. 738



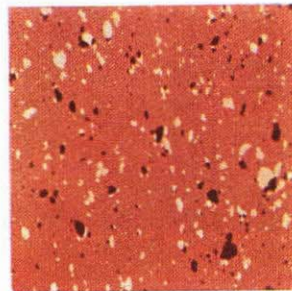
Exeter Red No. 741



Bedford Gray No. 736



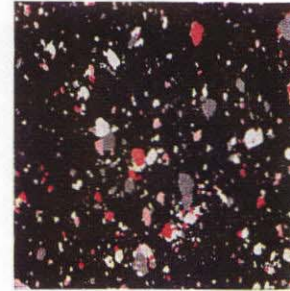
Concord Yellow No. 742



Arlington Cedar No. 740



Cape Cod Beige No. 737



Providence Charcoal No. 739

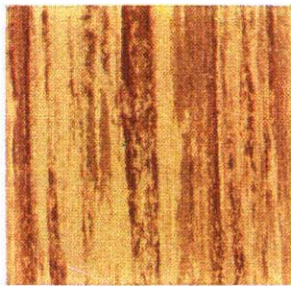
Refer to 1958 Armstrong Technical Data Book for complete range of colors

EXCELON TILE—STRAIGHT GRAINED

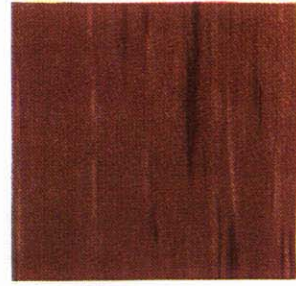
Armstrong Excelon Tile in handsome straight graining is available in 9" x 9" size in both 1/8" Gauge and Service Gauge (1/16"). All colorings are harmonized for design inter-mixing. The Wood-tone stylings create especially rich floor effects.



Dark Woodtone No. 789



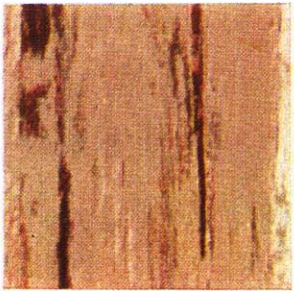
Light Woodtone No. 788



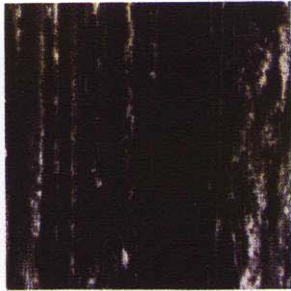
Redwoodtone No. 796



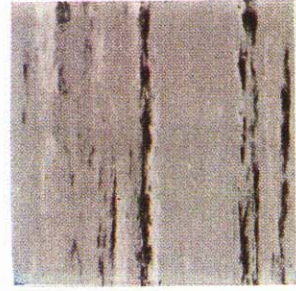
Choctaw Green No. 784



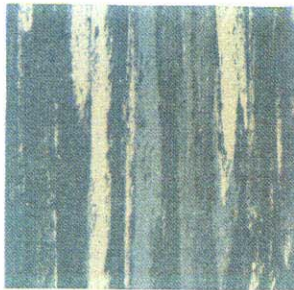
Iroquois Tan No. 783



Comanche Black No. 772



Mohawk Gray No. 771



Powhatan Turquoise No. 787



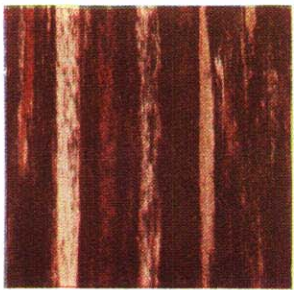
Sioux Pink No. 782



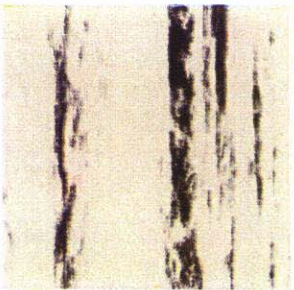
Mohave Charcoal No. 786



Pawnee Beige No. 778



Zuni Brown No. 785



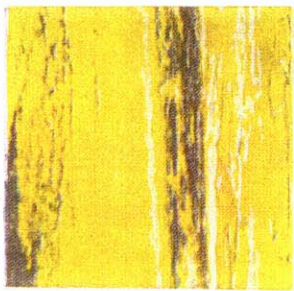
Seneca White No. 770



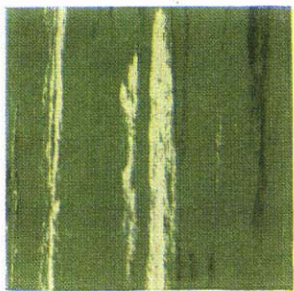
Mohican Cedar No. 779



Apache Red No. 777



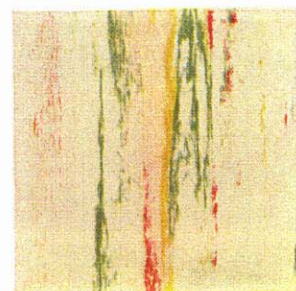
Seminole Yellow No. 774



Osage Green No. 780



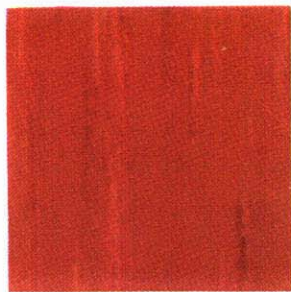
Aztec Gray No. 775



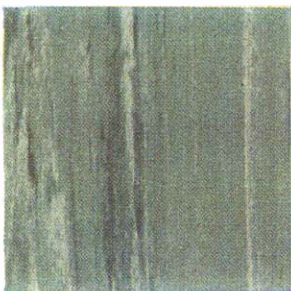
Cherokee White No. 776

Refer to 1958 Armstrong Technical Data Book for complete range of colors

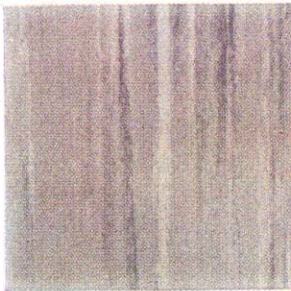
Designers Series Excelon Tile is a special group of delicate tone-on-tone colorings available in both $\frac{1}{8}$ " and Service Gauge. These handsome muted colors reflect the quiet richness of today's most luxurious decorator stylings. They are especially suited to high-style interiors.



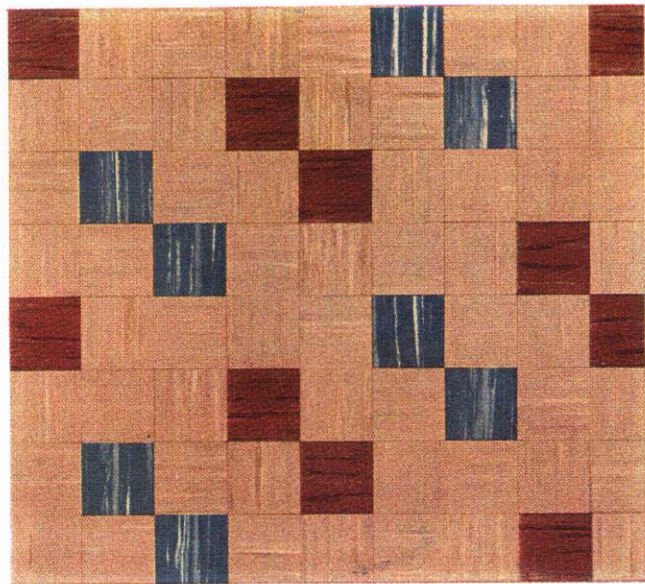
Sienna Copper No. 765



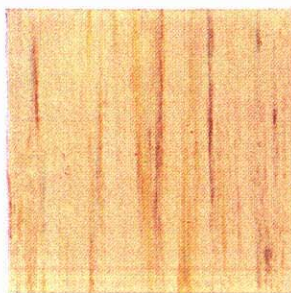
Mint Green No. 760



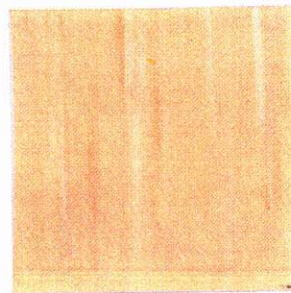
Silver Gray No. 761



This floor design illustrates the effectiveness of combining Designers Series and the bolder grained Excelon stylings. It features No. 762, No. 764, and No. 784.



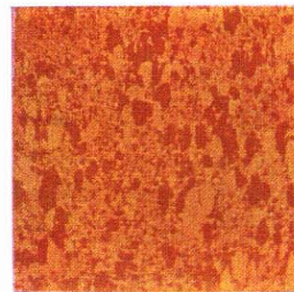
Ecrú No. 767



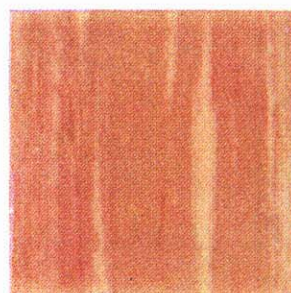
Ivory Tan No. 766

Corkstyle Excelon Tile is available in 9" x 9" tiles and in Service Gauge only.

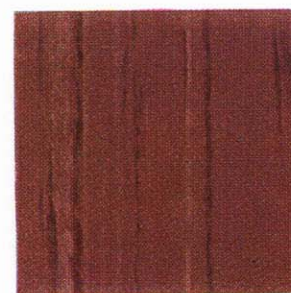
Each of the three tones in this series is designed to simulate a shading of natural cork. Corkstyle Excelon is not recommended for use in areas subjected to heavy concentrated traffic.



Light Corkstyle No. 798



Sand Beige No. 762



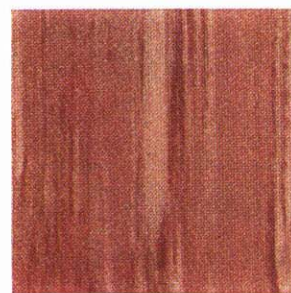
Mauve Taupe No. 764



Medium Corkstyle No. 797

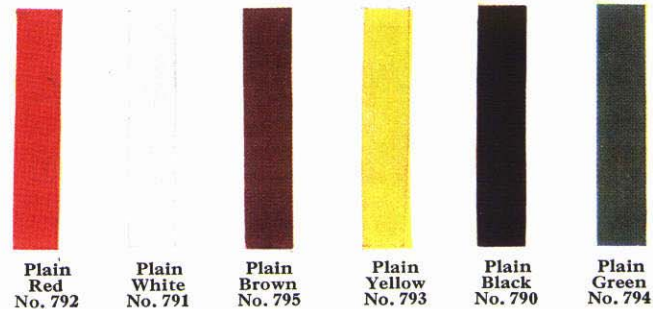


Dark Corkstyle No. 799



Rose Taupe No. 763

Excelon Feature Strips 1" wide and 24" long are available in Service Gauge and $\frac{1}{8}$ " Gauge. Excelon Feature Strips, shown at right, may be used to set off borders and provide opportunity to create custom effects in Excelon Tile Floors.



Plain Red No. 792 Plain White No. 791 Plain Brown No. 795 Plain Yellow No. 793 Plain Black No. 790 Plain Green No. 794

Refer to 1958 Armstrong Technical Data Book for complete range of colors